



Carlington Hampton News September 2022

Inside...

Summer successes
New trees & shrubs
October Calendar
Fungi finds
Overwintering trees
Stay in touch

Mushrooms were the inspiration for this cool figurine by Vera! Thanks to Evergreen Life Learning for sharing the artwork.

Summer Successes

All of the native species planted in 2021 in the Hampton Park meadow and the Clyde Bee and Butterfly Patch are doing very well, and several more were planted in 2022. We have started to save seed that we'll use to grow new plants in 2023.

The Staircase Garden in Carlington (Edgecliffe & Caldwell) boasts a bunch of new grasses and flowering plants thanks to the Revel Academy students who helped out on September 30!

Top: Butterfly milkweed at the CBBP; Soldier beetle on Anise hyssop in Hampton; Green sweat bee on New England aster at the CBBP



Bottom: Black-eyed Susan in Hampton; Revel Academy students planting native species at the Staircase garden

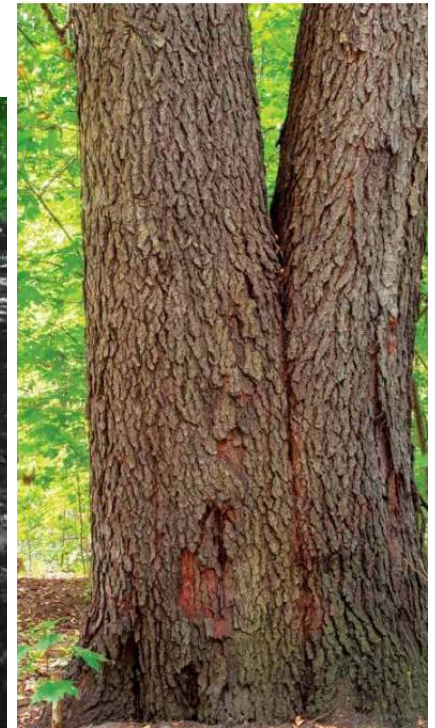


New Trees & Shrubs

Thirty shrubs and trees were planted in Hampton Park on September 29 as part of the effort to regenerate areas previously impacted by invasive knotweed. The NCC supplied the plants, biodegradable plastic rodent guards, and cellulose mats, also biodegradable, that retain moisture. The fencing will stay up until at least the spring of 2023.

The Species: Black Cherry (*Prunus serotina*), American Plum (*Prunus americana*), Grey Dogwood (*Cornus racemose*), Silky Dogwood (*Cornus amomum*), Pin Cherry (*Prunus pensylvanica*), and Wild Raisin (*Viburnum nudum*).

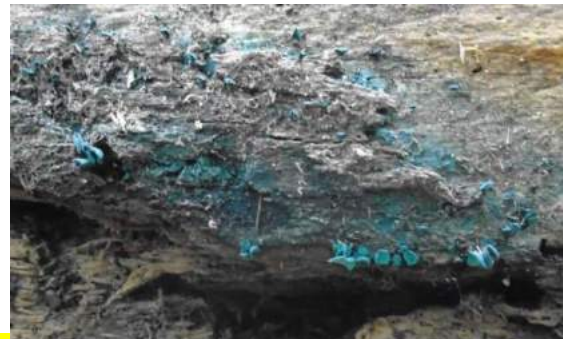
L-R: Patrick Lebrun, NCC student biologist, plants the first Pin cherry. A young Black cherry tree. Black cherry trees grow to about 22 metres tall and have a distinctive bark. These are two of four mature Black cherry trees close to the newly planted trees. Can you spot them all?



OCTOBER

Sun	Mon	Tues	Wed	Thu	Fri	Sat
<p>FOR KNOTWEED IN HAMPTON: Gloves, waterproof footwear (muddy areas), loppers and/or pruners. Meet along the culvert path. FOR BUCKTHORN IN CARLINGTON: Gloves, sturdy footwear, loppers, pruners, shovel. Meet at Clyde South & Castle Hill Crescent. We are also looking for a wood chipper for this project. If you or someone you know has one to lend for a day, please email CarlingtonHampton@gmail.com.</p> <p>HAMPTON WALK: Meet by the wading pool at the Parkview entrance (rain date Sunday the 23rd). OFNC (Ottawa-Field Naturalists' Club) WALK: Meet at the end of Morisset Ave near the gates into Carlington Park (rain date Sunday the 30th).</p>						<p>1 Knotweed Removal: Hampton 10 am to 1 pm</p>
<p>2 Buckthorn removal: Carlington 10 am to 2 pm</p>	3	<p>4 Buckthorn removal: Carlington 10 am to 2 pm</p>	<p>5 Buckthorn removal: Carlington 10 am to 2 pm</p>	<p>6 Buckthorn removal: Carlington 10 am to 2 pm</p>	7	<p>8 Knotweed Tarping: Hampton 10 am to 1 pm</p>
9	10	11	12	<p>13 Buckthorn removal & planting: Carlington 10 am to 2 pm</p>	<p>14 Buckthorn removal & planting: Carlington 10 am to 2 pm</p>	<p>15 Buckthorn removal & planting: Carlington 10 am to 2 pm</p>
<p>16 Buckthorn removal & planting: Carlington 10 am to 2 pm</p>	17	18	19	20	21	<p>22 Hampton Ramble: 1-3 pm</p>
23	24	24	26	27	28	<p>29 Carlington Walk with OFNC 1-3 pm</p>
30	31	<p>Please do not toss your pumpkins into the Woods. They can attract other animals to the park, including rats. Use your Green Bin or home composter, or roast the pumpkin for soup or pie!</p>				

Fungi finds in Hampton & Carlington



Until October 15, 2022 you can take part in the **Great North American Fungi Quest**, the largest fungi bioblitz ever held. Be part of community science!
Details at: <https://thinkfungi.org/fungiquest/>

Overwintering trees

We have made arrangements with Ecology Ottawa to take trees left over at the end of the 2022 season. Many thanks to those of you who have already offered to overwinter some of these trees! We should know how many we may be getting by the end of October.



*Local tree with its roots girdled
Photo by Astrid Nielsen.*

When it's time to plant, leading tree research says to dig square holes, not round ones to avoid "girdling." Girdling happens when a tree's roots grow in a circular pattern around the trunk at or below the soil. This gradually strangles the trunk of the tree.

If you have a tree still in a pot that you want to keep over winter for planting next year, make sure that you're giving it the right conditions for its species. Most North American tree species don't need a lot of attention over the winter, but there are things you can do to keep it protected from frost and critters!

Resources: The Spruce and Gardening Know How provide several different methods for overwintering trees in containers. Be sure to research any special information you need to know about the species you have.

<https://www.thespruce.com/how-to-overwinter-container-plants-1402050>

<https://www.gardeningknowhow.com/ornamental/trees/overwinter-potted-trees.htm>

Stay in touch!

Friends of Hampton Park

www.facebook.com/Friends-of-Hampton-Park105498545119641/

Friends of Carlington Woods

www.facebook.com/groups/1105428122826947/

Twitter: @CarlingtonHill

Learn more about the value of **Urban Natural Areas**. Read the case for them:

<https://carlingtonpark.home.blog/2022/09/19/the-case-for-ottawas-urban-natural-areas/>

Email for both groups: CarlingtonHampton@gmail.com

YouTube Channel: <https://www.youtube.com/channel/UC7xTddRYb0ovBAjXDMDfWxg>

Hampton-Iona Community Group <https://hamptoniona.wordpress.com/>

Carlington Community Association www.carlingtoncommunity.org/